

# 4 Transfer recordings to the PC

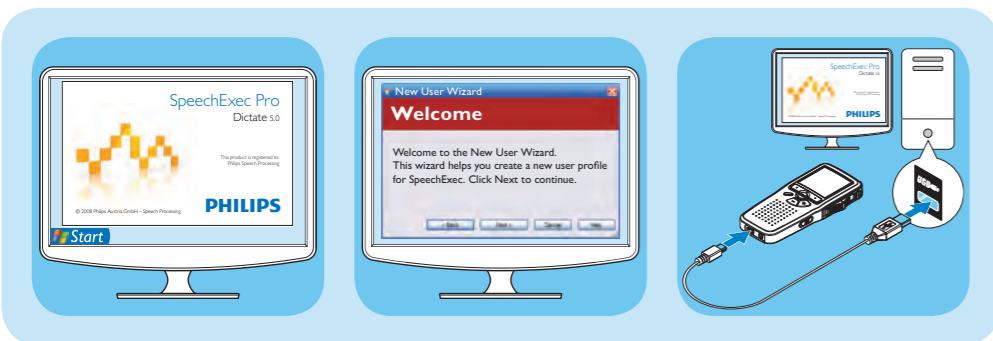
**DE** Aufnahmen auf den PC übertragen

**ES** Transferencia de grabaciones al PC

**IT** Trasferimento delle registrazioni sul PC

**FR** Transfert des enregistrements vers le PC

**NL** Opnames downloaden naar de PC



**EN Caution:** Magnets are used for the pouch. Keep magnetic cards (such as credit cards) away from the pouch.

**DE Achtung:** Für das Etui werden Magnete verwendet. Halten Sie Magnetkarten (wie etwa Kreditkarten) vom Etui fern.

**FR Attention :** Des aimants sont utilisés pour la housse. Éloignez les cartes magnétiques (comme les cartes de crédit) de la housse.

**ES Precaución:** La funda contiene piezas magnéticas. Mantenga cualquier tarjeta magnética alejada de la funda (como por ejemplo tarjetas de crédito).

**NL Let op:** Er zitten magneetjes in de hoes. Houd magnetische kaarten (zoals credit cards) uit de buurt van de hoes.

**IT Avvertenza:** La custodia contiene delle parti magnetiche. Tenere lontano dalla custodia le schede magnetiche (ad esempio le carte di credito).

## Need help?

Look up our Website [www.philips.com/dictation](http://www.philips.com/dictation)

## Besoin d'aide?

Visitez notre page Web à l'adresse [www.philips.com/dictation](http://www.philips.com/dictation)

## Benötigen Sie Support?

Besuchen Sie unsere Website [www.philips.com/dictation](http://www.philips.com/dictation)

## ¿Necesita ayuda?

Consulte nuestro sitio Web [www.philips.com/dictation](http://www.philips.com/dictation)

## Hulp nodig?

Ga naar onze website [www.philips.com/dictation](http://www.philips.com/dictation)

## Bisogno d'aiuto?

Contatta il sito internet [www.philips.com/dictation](http://www.philips.com/dictation)

Specifications are subject to change without notice.

Trademarks are the property of Royal Philips Electronics or their respective owners.

© 2008 Royal Philips Electronics. All rights reserved.

Document version 2.1, 02/06/2008. 5103 109 9686.2

# Quick start guide

Digital Pocket Memo 9600

Digital Pocket Memo 9620



For product information and support, visit [www.philips.com/dictation](http://www.philips.com/dictation)

EN Quick start guide

DE Kurzanleitung

FR Guide de démarrage rapide

ES Guía de inicio rápido

NL Snelle startgids

IT Guida rapida di introduzione

**PHILIPS**

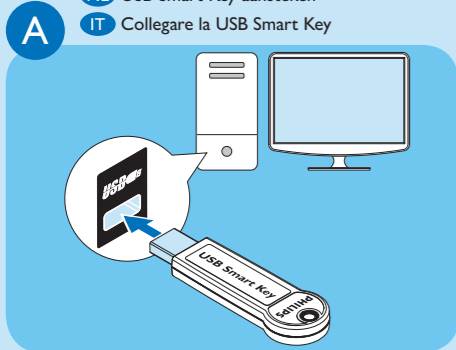
# 1 Install the software

- DE Installieren der Software
- ES Instalar el programa
- IT Installazione del software

- FR Installation du logiciel
- NL De software installeren

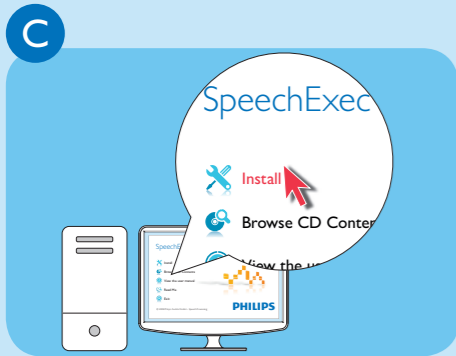
## Connect the USB Smart Key

- DE USB Smart Key anstecken
- FR Conncter l'USB Smart Key
- ES Conecte el USB Smart Key
- NL USB Smart Key aansteken
- IT Collegare la USB Smart Key



## Install SpeechExec software

- DE SpeechExec-Software installieren
- FR Installation du logiciel SpeechExec
- ES Instalar el programa SpeechExec
- NL De SpeechExec-software installeren
- IT Installazione del software SpeechExec



# 2 Install the hardware

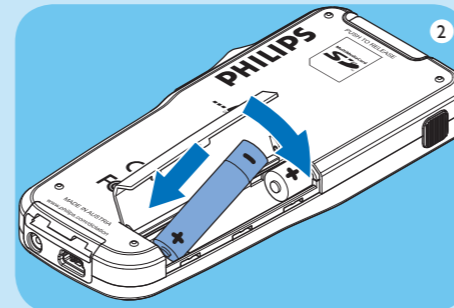
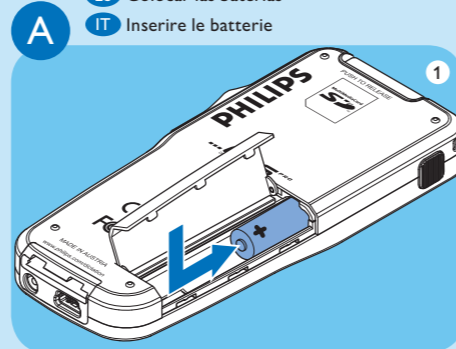
- DE Installieren der Hardware
- ES Instalar el hardware
- IT Installazione del hardware

- FR Installation du matériel
- NL De hardware installeren

## Insert the batteries

- DE Einlegen der Batterien
- ES Colocar las baterías
- IT Inserire le batterie

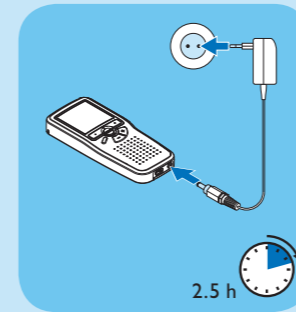
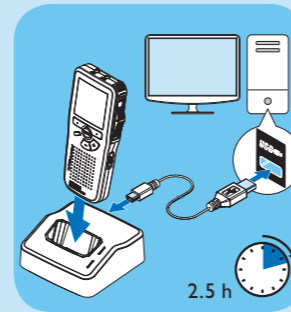
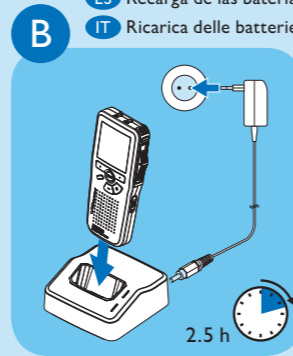
- FR Mettre les piles en place
- NL De batterijen plaatsen



## Recharge the batteries

- DE Aufladen der Batterien
- ES Recarga de las baterías
- IT Ricarica delle batterie

- FR Recharger les piles
- NL De batterijen opladen



# 3 Record

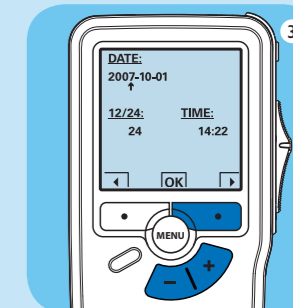
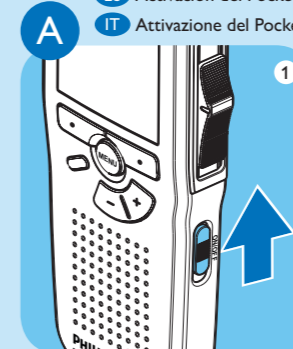
- DE Aufnehmen
- ES Grabación
- IT Registrazione

- FR Enregistrer
- NL Opnemen

## Activate the Digital Pocket Memo

- DE Aktivieren des Pocket Memo
- ES Activación del Pocket Memo
- IT Attivazione del Pocket Memo

- FR Mettre le Pocket Memo en service
- NL De Pocket Memo activeren



## Create a recording

- DE Eine Aufnahme erstellen
- ES Crear una grabación
- IT Creare una registrazione

- FR Créer un enregistrement
- NL Maak een opname

