

OLYMPUS PORTABLE

Integration Guide

Last modified: 5/23/12

Copyright© 2012 Digital Accessories Corporation. All Rights Reserved.

Information in this document is subject to change without notice. No part of this publication may be reproduced, stored in a retrieval system, or transmitted in any form or any means electronic or mechanical or photocopying and recording for any purpose other than the purchaser's personal use without the written permission of Digital Accessories Corporation.

Digital Accessories Corporation (DAC)

Please note: DAC operates through authorized distribution dealers. If you are an end-user, please contact the local dealer who sold you the product for technical support or future sales. DAC also does not support provide technical support for issues related to Olympus' digital portables. Please contact your Olympus provider for technical assistance or repairs.



Table of Contents

Introduction

Supported Olympus Models.....	3
-------------------------------	---

Programming

User ID.....	4
--------------	---

Worktype.....	5
---------------	---

Integration

iChannel Express.....	6
-----------------------	---

Voice Solutions Brooktrout.....	7
---------------------------------	---

Voice Solutions Phoenix.....	8
------------------------------	---

Introduction

The purpose of this user guide is to assist DAC dealers with integrating Olympus digital portables into the Voice Solutions server infrastructure or iChannel Express.

Only the latest and most popular commercial-grade portables are discussed. If you have an Olympus model that is not listed in this guide – and creates DSS files – then please contact our support staff about compatibility.

- Supported Olympus Portables

DS-4000

DS-5000

DS-7000

Programming

Whether you are using the portable with a Voice Solutions server or iChannel Express, a User ID must be programmed to ensure proper demographics. All programming can be done from Olympus' management software, which is included with each portable.



NOTE: If you are unsure of how to program a User ID or worktype from Olympus' software, please consult that application's user guide. DAC's support staff is not trained on Olympus application functionality and will be unable to assist with navigating the program.

- User ID

The portable's User ID is used to provide demographic information. The ID is read from right to left. The first 2 numeric digits are taken as the Exclusive Assignment (Exc), the next 3 are the ID, and the alpha characters to its left will populate the Author demographic field. Notice some examples below of IDs and how they are handled.

Author Name	Author ID	Assigned Typist ID	What to Program
Jones	1	901	Jones00101
Joe Smith	20	950	JoeSmith02050
Dr Edwards	355	975	DrEdwards35575

- Worktype

You may configure the portable to use worktypes. Worktypes can be used to populate the Worktype or Exclusive Assignment field.

The worktype format is: 11-Name (see examples below). The name is not required but makes user selection easier.

Worktypes		
Worktype Names	Worktype Numbers	What to Program
Memo	1	01-Memo
Letters	2	02-Letters
H&P	10	10-H&P
Followup	15	15-Followup

To use the portable's Worktype for the Exclusive Assignment field, you must enable this feature on the Voice Solutions server or in iChannel Express. If you decide to implement this feature, leave off the last two numeric characters that typically would correspond to the Exclusive Assignment demographic when you program the User ID.

iChannel Express

To enable, go to **File>Settings>Advanced** tab. Check the box for **Olympus Dss Option: Use Worktype for Typist Assignment**.

Voice Solutions Brooktrout Server

In the Dss Importer application, check the box for **Olympus Import: Use WT data for Exc Assignment**.

Voice Solutions Phoenix Server

In the Navigator application, go to **System Manager>System** button>**Configuration** tab. Under the Dss heading, check the box for **Use Worktype data for Secretary Selection**. Click **Apply** to save.

Worktypes used as Exclusive Assignment Selection		
Typist Names	Typist IDs	What to Program
Lisa	901	01-Lisa
Ellen	902	02-Ellen
Sue	910	10-Sue
Mandy	915	15-Mandy
Scarlet	972	72-Scarlet

Integration

After the portable is programmed, follow the steps below for the product you will integrate with.

- iChannel Express

In order to play dss files in iChannel Express, the dss codec must be installed. Newer Express installs have this included. If your version gives any errors while attempting to play dss files, please download and install the latest version of iChannel Express to resolve this issue.

Downloading

You can use Olympus' proprietary software to download the audio files or our free Dss Extractor Pro. Regardless of the application to download, the audio files should be sent to the path set for iChannel Express' **Dictation Directory**.



NOTE: For assistance in configuring iChannel Express' Dictation Directory or Dss Extractor Pro's download path, please see that application's user guide.

- Voice Solutions Brooktrout Server

Brooktrout servers are no longer in production, but if you have an older server that you wish to add Olympus portables to, then be sure to follow the steps here.

Downloading

You can use Olympus' proprietary software to download the audio files or our free Dss Extractor Pro. Regardless of the application to download, the audio files should be sent to the **Source** path set in **Dss Importer** on the server.

Server Settings

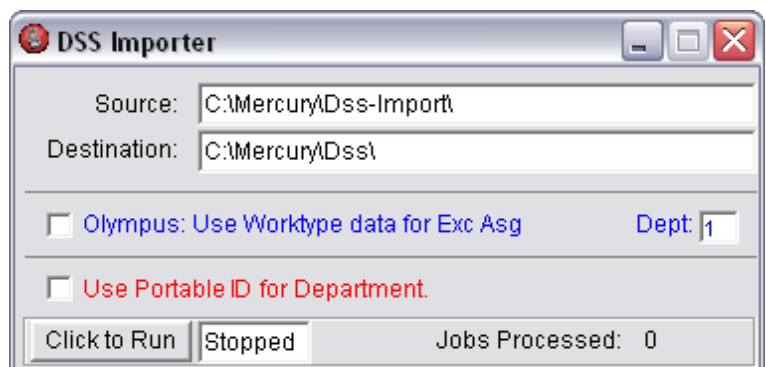
On the server, you will need to configure both **Dss Importer** and **Dss Converter**.

1. By default **Dss Importer** is located at **c:\mercury\dss importer**. You must be running version 1.09 or later.

2. Open **Dss Importer**.

3. Verify that the default paths are in place (see picture below). Ignore the checkboxes.

Source should be **c:\mercury\dss-import**
Destination should be **c:\mercury\dss**



4. By default **Dss Converter** is located at **c:\mercury\converter**. You must be running version 1.3.0.6 or later. To run this version, your server must have a sound card installed.

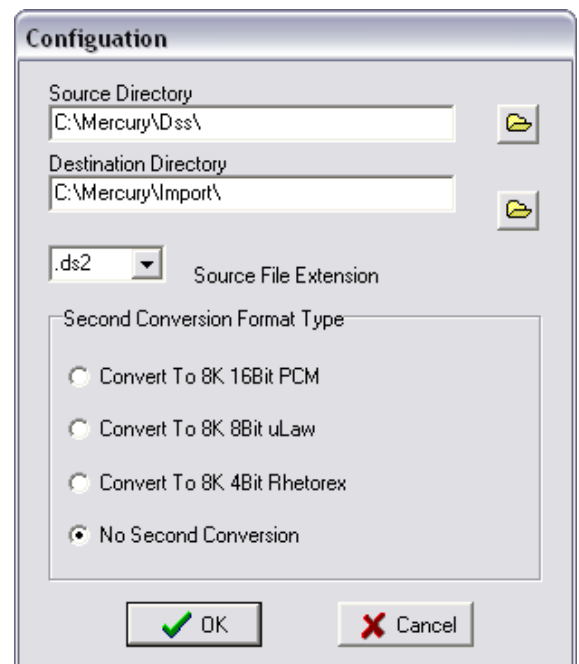
5. Open **Dss Converter**.

6. Verify that the default paths are in place. Go to **View>Configuration**.

Source Directory should be **c:\mercury\dss**
Destination Directory should be **c:\mercury\import**
Source File Extension should be **.ds2**
Second Conversion Format Type should be:

Option 2: Convert to 8k 8bit uLaw if you are using telephony transcription.

Option 4: No Second Conversion if you are using software transcription such as iChannel and iNet. Using telephony transcribe stations with this conversion will cause the dictation to play slow.



- Voice Solutions Phoenix Server

Phoenix servers are the latest in the Voice Solutions server product line. Now it is easier than ever to integrate digital portables.

Downloading

You can use Olympus' proprietary software to download the audio files or our free Dss Extractor Pro. Regardless of the application to download, the audio files should be sent to the server's **Audio Import** path.

By default, the **Audio Import** path is **\$servername\$import**, with **\$servername\$** being the Phoenix server's domain name or IP address. For example this could be: **\\dac7\import**. Any dss files that are copied to that directory the server will automatically convert and import.

Server Settings

There is no server configuration necessary. Setup is complete!