

DAC

Pedal Pro



Last modified: 9/11/14

Copyright© Digital Accessories Corporation. All Rights Reserved.

Information in this document is subject to change without notice. The software may be used or copied only in accordance with the terms of the EULA. No part of this publication may be reproduced, stored in a retrieval system, or transmitted in any form or any means electronic or mechanical or photocopying and recording for any purpose other than the purchaser's personal use without the written permission of Digital Accessories Corporation.

Digital Accessories Corporation (DAC)



Getting Started

DAC Pedal Pro is an application that allows you to assign keystrokes to a 3 or 4 button DAC foot control. This is helpful for a variety of applications that use hotkeys to perform functions. For example, with Dragon speech recognition software, Pedal Pro can allow a button on the foot control to handle turning the microphone on or off.

Pedal Pro is designed to run in the background and has an icon on the Windows taskbar. The hotkey functions assigned to the foot control only work if Pedal Pro is running. In addition, Pedal Pro can only work if the desired application either has focus to receive the keystrokes, or always monitors keystrokes even when running in the background (as Dragon speech recognition software does).

System Requirements

Before installing, please make sure that your computer meets the following requirements:

- Windows XP SP3, Windows Vista SP1, Windows 7, or Windows 8
- 10 MB hard disk space
- 1024 x 768 resolution
- 1 USB port
- Internet access (to activate your product key)

Supported Foot Controls

Pedal Pro requires a DAC USB foot control for proper functionality. The DAC **FP-110-USB** (3 button model) and DAC **FP-110-USB4** (4 button model) are supported.

Installing

<p>Step 1</p>	<p>Run the installer.</p> <p>You can do so from either the Install CD you received or a downloaded installer.</p>
<p>Step 2</p>	<p>Keep all of the defaults and simply click Next through each screen.</p>
<p>Step 3</p>	<p>Plug the foot control into an empty USB slot. The drivers will load automatically.</p> <p>Note: If you are plugging the foot control into a USB hub and are experiencing issues, please try connecting it directly to the computer.</p> <p>Installation is complete!</p> 
<p>Step 4</p>	<p>When you first open Pedal Pro, it will prompt you want to register and select whether you are using a 3 or 4 pedal foot control.</p> <p>Select the foot control type that you are using.</p> <p>To register, enter your Product Key in the box and click Register Now.</p> <p>If you wish to register at a later time, you can access registration from File>Register.</p> <p>Installation is complete!</p> 

Configuring

Before you can begin to use DAC Pedal Pro, the foot control must be assigned hotkey functions. When you first open the application, it will ask you to select whether you are using a 3 or 4 pedal foot control. After that the main screen will open (4 pedal configuration shown below).

Each pedal on the foot control can be assigned a single keystroke or a combination of keystrokes for when it is pressed (the **Depress** value) and when you let off the pedal (the **Release** value). You can leave a field blank if desired and no function will be assigned to it.

Pedal Numbers

Each pedal on the foot control is assigned a number. To know what number it is, simply press that particular pedal and the pedal number box will light up. For example, if the pedal lights up box 2, then to configure that pedal you will set up the fields for section 2.

Label

The **Label** field allows a name to be assigned to each pedal's hotkeys. This allows you to easily determine what function you have assigned to that pedal.

Depress

The **Depress** field holds the keystroke(s) that will be sent when that pedal is pressed down. If you wish to enter a special key (e.g. **delete**) select it from the dropdown menu beside the field.

Release

The **Release** field holds the keystroke(s) that will be sent when that pedal is released (when you take your foot off it). If you wish to enter a special key (e.g. **delete**) select it from the dropdown menu beside the field.

Changing Foot Control Styles

If you have a 3 pedal foot control and have now changed to a 4 pedal style (or vice versa), you can easily make this change from the menu bar. Simply click on **Pedal Style** and from the drop-down menu select your new style. Pedal Pro automatically adjusts the number of hotkey fields available based on your selection.

The screenshot shows the 'Pedal Pro' application window. At the top is a menu bar with 'File', 'Help', '4 Pedal Style', and 'Minimize To Tray'. Below the menu bar are four numbered boxes (1, 2, 3, 4) representing the pedals. Below these is a message: 'Exit Dragon before setting hotkeys' and 'Blank fields denote no function.' The main area contains four sections, one for each pedal. Each section has a 'Label' field, a 'Depress:' field, a 'Release:' field, and a 'Special Keys' dropdown menu. The 'Depress' and 'Release' fields are currently empty. At the bottom, there is an 'Update' button and a status indicator that says 'Your Pedal Is Connected!'.

Choosing Hotkeys

IMPORTANT!

Before you can configure Pedal Pro's hotkeys, be sure to quit the application that you will be using the foot control with (e.g. Dragon speech recognition). If you do not, then any keystrokes you enter as a hotkey for Pedal Pro will go into that application, making it impossible to configure Pedal Pro.

First, you need to determine the hotkey you want to configure for each pedal on the foot control. To do this, you will want to see what hotkeys are currently being used by your application.

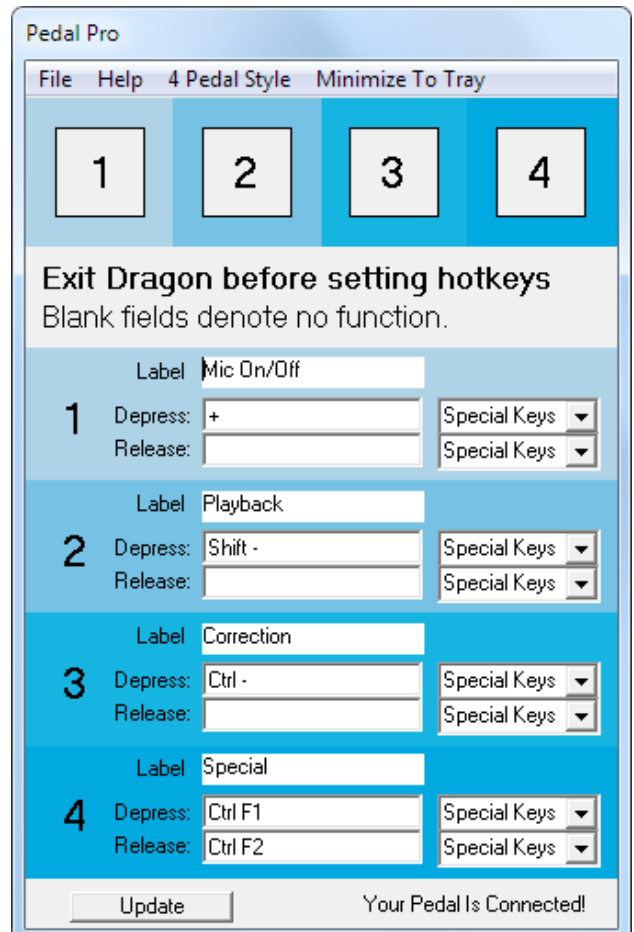
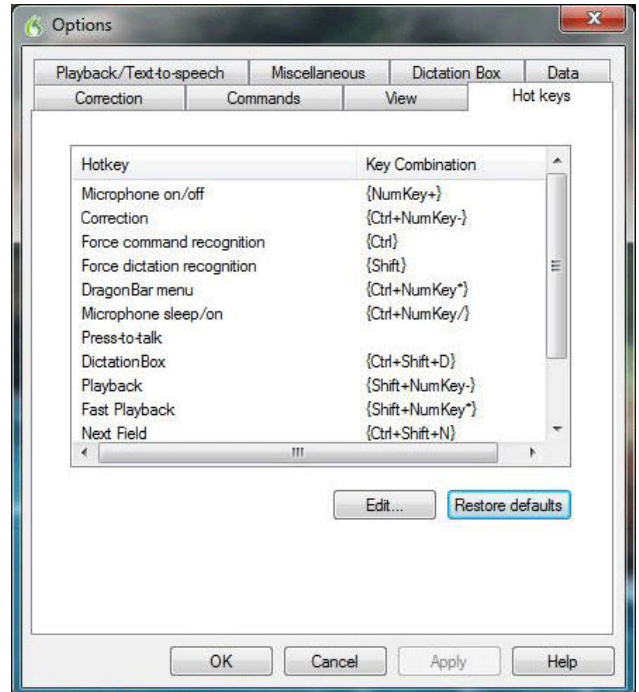
TIP - If you are using Dragon, the image to the right shows the Hotkey configuration screen.

Pedal Pro only sends a hotkey when you use the foot control. **If you want to change the function that a particular hotkey performs, this must be changed in the desired application, not Pedal Pro.**

Now that you have your hotkeys set up in your application, you can assign them to the desired pedal on the foot control in Pedal Pro.

1. Enter a name in the **Label** field (optional)
2. Enter a hotkey in the Depress and/or Release fields
3. Click **Update** to save your settings

Special keys can be selected from the dropdown menu (to the right of each field) if needed. Each field is limited to only 1 alphanumeric character. So your hotkey cannot be A5, 12, or such. However, the hotkey can contain multiple keystrokes when using special keys. For example, if you want the hotkey to be SHIFT+CTRL+4, then simply press all three of those keys on the keyboard at the same time and it will be entered.



Run at Startup

By default, Pedal Pro is configured to automatically run whenever your computer starts up. It is recommended that this option be kept. This helps prevent the frustration of having the foot control not respond because you forgot to launch Pedal Pro.

The automatic startup feature can be disabled or enabled at any time though. Simply go to **File>Run at Startup**. If the feature is enabled, a check mark will be beside the option. If there is not a check mark, then the feature is currently disabled.

NOTE: Enabling/disabling the **Run at Startup** feature requires administrator rights in Windows. If you are logged in with a restricted user account, you may need your network administrator to re-open Pedal Pro for you using an administrator account, and then make the change. This can be done by right-clicking Pedal Pro's icon and choosing **Run as administrator**.

NOTE WINDOWS 8 USERS: For those using Windows 8, even if you are logged in as a user with full, administrator rights, by default you will not have permission to change this setting. To do so, right-click Pedal Pro's icon and choosing **Run as administrator**.

Check for Update

This can be accessed from **File>Check for Update**. It will open a webpage with a link to the latest version of Pedal Pro. If it is newer than your current version, you may want to download the setup and run the installer. This will update your version of Pedal Pro.

Troubleshooting

Issue Installer runs with errors.	Possible Cause You do not have sufficient security credentials to run the installer.	Solution Run the installer as an admin instead of a restricted user.
	Your operating system is not supported by Pedal Pro.	Verify your operating system is listed under the Getting Started section. If it is not, install on a supported OS.
Issue Pedal Pro will not keep my settings after being closed.	Possible Cause You do not have sufficient security permissions.	Solution On the Pedal Pro application directory, assign Full Control to your user account or group, or log into Windows with an admin account.
Issue The foot control is not working (and this is your first time using Pedal Pro).	Possible Cause The drivers have not loaded.	Solution Reboot your computer.
	The USB port is bad.	Plug the foot control into a different USB port, preferably one that you can verify is functioning correctly.
	You have the foot control plugged into a USB hub.	Some USB hubs are not compatible with the foot pedal. Plug the foot control directly into one of your computer's USB ports.
	You are not using a compatible foot control.	Verify that you are using a DAC FP-110-USB or DAC FP-110-USB4.
Issue The foot control is not working (but it worked previously).	Possible Cause Pedal Pro is not running.	Solution Open the Pedal Pro application.
	The USB port is bad.	Plug the foot control into a different USB port, preferably one that you can verify is functioning correctly.
	The application for Pedal Pro is either not running or requires focus but does not have focus.	Open the application Pedal Pro sends hotkeys to. If it is already open, it may require focus. If so, make sure the application is not minimized but is on top of all other programs and windows.