



This manual is intended for iNet system administrators, and will assist you a variety of tasks, such as: installation, configuration, and troubleshooting. For basic application use and user functions, see the iNet User Manual.

### **System Requirements**

Pentium III or Celeron processor  
256MB RAM  
Sound Card  
Windows 2000 or XP  
Available USB port  
20MB of hard drive space  
Network connection to the Voice Solutions server

### **Installation**

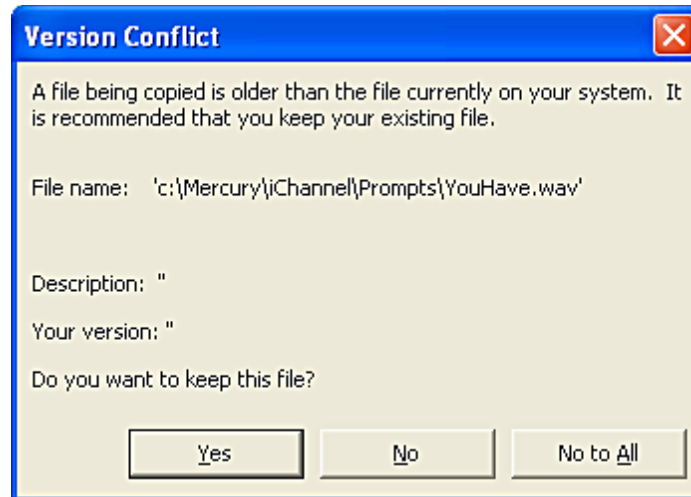
**Preface:** Outlined below are the steps to load the iChannel Suite to the local PC of the user. Keep in mind that you may download the latest version of the applications at anytime from our FTP site at <ftp://www.dacsupport.com>. We can provide you with the username and password.

#### **Using the Installation Setup**

**Step 1:** When you load the install CD provided, you will get a installation screen. If the installation screen does not appear, start the install by opening the CD:

***iChannel\_Suite\_Install>Setup.exe***

**Step 2:** It is recommended that you do not change any of the defaults. If you get a version conflict (as the picture below shows), always choose **Yes**.



**Step 3:** The iChannel Suite installation will create a desktop shortcut for each application. Keep the icon for iNet and delete iChannel and iChannel Lite's shortcuts.

**Step 4:** Plug in the IN-DAC USB foot pedal to the PC. This specific foot pedal has the software license key embedded in its processor.

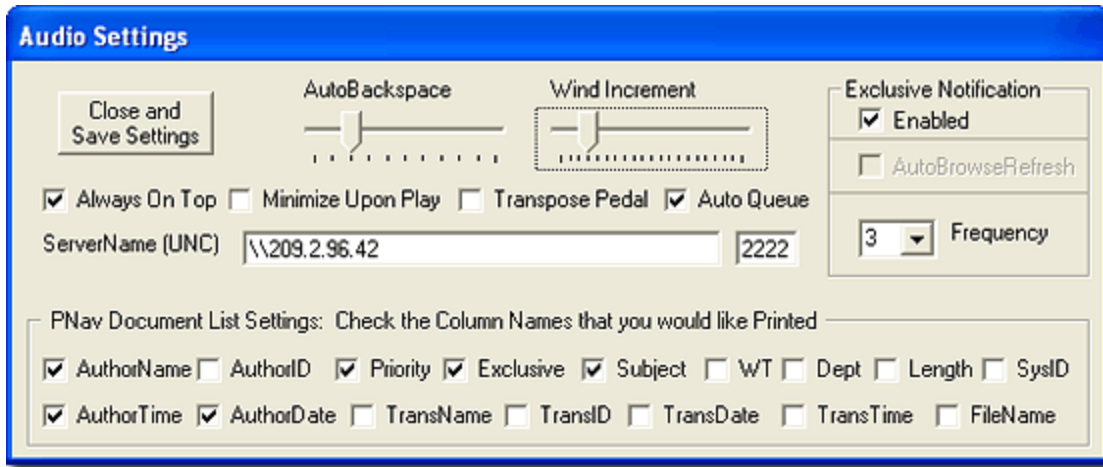
**Step 5:** Upon launching any of the iChannel Suite applications for the first time, some basic configuration is necessary. See the configuration section of their corresponding User Manuals for further instructions.



Although it isn't always necessary, it is recommended that when you run the *Setup* - or the first time one of the applications is launched - you do so under the *Administrator* account, or one with administrative privileges. Failure to do so may produce error messages during the *Setup*, or when you first try to launch the application.

## Configuration

iNet offers a variety of audio settings you can configure to meet your needs. Start by going to **File>Settings** in the menu bar. You will get a window like the one below.



**AutoBackspace:** This determines (in seconds) how big of an increment the dictation will automatically backup each time you press Play. You may set it from 0 (disabled) to 5 seconds.

**Wind Increment:** This determines (in seconds) at what increment you will rewind or fast forward through a file. You may set it from 0 to 20 seconds.

**Always On Top:** When selected, the iNet window will always remain on top of other applications.



This does not apply to remote desktop applications, such as Terminal Services, Citrix, etc. These programs will cover iNet, including the worklight on their taskbar.

**Minimize Upon Play:** If checked, the iNet window will minimize to the taskbar when you begin to play the dictation.

**Transpose Pedal:** This will switch the Rewind/FastForward buttons on your foot pedal, making the right pedal FastForward, and the left pedal Rewind. Play is always the center pedal.

**Auto Queue:** If checked, iNet will automatically present you the next available job (should there be one) after you have *Signed Off* (finished transcribing) the current one. **Note:** This is applicable to jobs requested by *Exclusive*, *FIFO*, or *Categorized*, NOT *Specific*.

**ServerName (UNC):** The path to the Voice Solutions server must be entered here. A typical path would be: \\dac1  
Dac1 being the server's UNC name. You may also use the IP address of the server if necessary. An example of that would be: \\10.0.21.1

**Work Notification:** This enables the worklight feature that runs on your taskbar.

- **Frequency** - You can specify how often (in minutes) iNet checks with the server for new exclusive assignments.

**PNav Document List Settings:** The boxes which are checked will determine which demographic fields will be present in the text file when the **Print PNav List** is used.

## Other Administrative Tasks

Although not necessary, below are some additional features that provide more customization for your setup.

### Upgrades

In the *VSListener* folder (under *Mercury*) on your Voice Solutions server, you will notice a folder called *Upgrade*. This is the folder that iNet looks to when you choose the **Check For Updates** option from the menu. If the version of iNet in the *Upgrade* folder is newer than the version the user is currently using, it will download it from the server and install it the next time iNet is reopened.



Only the executable (.exe) should be put in the Upgrade folder. The exe's name must be **iNet-Player.exe** for the upgrade to be successful. Thus, *iNet-Player 1.0.6* or *iNet 1.0.6* or any other naming convention will not work.

### Transcriptionist User Profiles

With iNet, it's possible to create a user profile for a transcriptionist with access restrictions as well as a password prompt to log on. These features are actually part of the System Manager.

**Passwords:** In your Voice Solutions System Manager, go to the Transcriptionist Profiles. Under the *General* tab you will see a field for a 4 digit, numeric password. When the user logs into iNet, a password prompt will appear.

Transcriptionist: 901 Grooms

Add Delete

Find by

Name Grooms

User ID 901

Scrolling

Total Transcriptionists: 7

Transcriptionist Profile

Memorize Clone

General Options Advanced Annotation

User ID 901

Title Restricted

Name, last Grooms

Name, mid

Name, first Lisa

Phone

Fax

Email

Password xxxx

**Permissions:** In your Voice Solutions System Manager, go to the Transcriptionist Profiles. Under the *General* tab is a *Title* field. A **blank field** for *Title* will allow the user to access all system jobs through PNav, regardless of the exclusive assignment (the typical configuration for most clients). Entering the following words into the field

(words are case sensitive) will assign their corresponding permissions to that user.

- **Supervisor** - This provides the user with full access to all jobs. Ultimately, it is the same as leaving the field blank, except a Supervisor can also **review jobs** that are **marked In Trans** (currently being transcribed) **and Saved** by another transcriptionist. To make use of this feature, you must use the PNav to list the jobs and Right-Click the desired job bring up a menu. The last option will be *Supervisor Review* (this option does not appear in the menu unless you are a *Supervisor*).



A Supervisor account is also needed to modify the *WT* (worktype), *Dept*(Department), and *Subject* demographic fields when doing a **Special-Return**.

- **Restricted** - A user with this permission may only view with Pnav, and transcribe jobs, assigned to their ID.
- **Reviewer** - User can access all jobs, regardless of exclusive assignment through PNav, but **cannot Save or Complete (Sign Off)** jobs.
- **RestrictReview** - Like a Reviewer, this user cannot Save or Complete (*Sign Off*) jobs. However, only jobs exclusively assigned to this user's ID can be accessed and reviewed.

### Request Restrictions

In your Voice Solutions System Manager, go to the Transcriptionist Profiles. Under the *Options* tab, in the box **Document Retrieval Modes**, you have the 5 Request Modes for iNet. By default all five (*Exclusive Assignment, Category, Specific, Fifo, and Your Saved Documents*) are checked. However, unchecking one of the Retrieval Modes will gray that mode out from any iNet logged in with that transcriptionist ID. For example: unchecking *Category* and *Fifo* for ID 901 will only allow that transcriptionist to use iNet's *Exclusive, Specific, and Saved* request modes.

Transcriptionist: 901 Grooms

Transcriptionist  Reviewer

Add Delete

Find by

Name Grooms

User ID 901

Scrolling

Total Transcriptionists/Reviewers: 7

Transcriptionist Profile

Memorize Clone

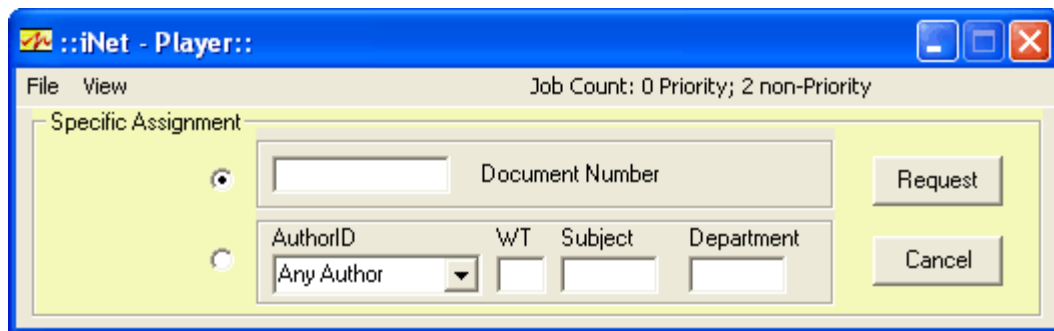
General Options Advanced Annotation

Document Retrieval Modes

- by Exclusive Assignment
- by Category
- Specific
  - by Document Number
  - by Author ID  Ignore Exc/Asg
  - by Worktype  Ignore Exc/Asg
  - by Subject  Ignore Exc/Asg
- by Department  Ignore Exc/Asg
- by Fifo (First-In, First-Out)
- by Your Saved Documents



Under the **Specific** heading, you will notice five additional boxes (*Document Number*, *Author ID*, *Worktype*, *Subject*, and *Department*). These boxes correspond to the *Specific* request filters in iNet, as seen in the screenshot below. Unchecking any of these boxes will gray the corresponding iNet field out. In addition, unchecking *Document Number* will disable the ability to double-click a job in PNav to request it.



The "Specific" Request Screen



**Tip:** If you have decided to lock a particular transcriptionist down to a particular set of work types, departments, or categories (see *Config.ini* heading below), you may want to implement some of these request restrictions to fully guarantee security. The work type, department, and category locks only apply to what they see in the PNav and when they go to *Specific* mode, as it prepopulates the corresponding box with the department or work type that you locked in their *Config.ini*. However, the transcriptionist can still request work outside of their restrictions if the *FIFO*, *Exclusive*, or *Specific* (with a *Document Number*) modes were used. So it would be wise to uncheck those features on that transcriptionist profile to prohibit that ability.

## Config.ini Modifications

For the most part, you will rarely need to modify the *Config.ini*. However, there are a few entries under the **[Special]** heading that you may find useful for customization. Below is a screenshot of these lines. The *Config.ini* is located in the iNet directory and can be modified with the application *Notepad*, available on all Windows PCs.

```
[Special]
PNavDoc=Doc
PNavSubject=Patient
PNavAuthorOrder=1
StartSentinel=0
WTLock=
DeptLock=0
CategoryLock=1, 2, 3
MakeHeader=0
PNavDocumentListParameters=1011100011000000
```

**PNavDoc=** The variable entered here will determine what is displayed in the first column of iNet's PNav. In the example above, we have the variable of **Job**. This means that instead of displaying **Doc** in the column (as is the default), **Job** will be substituted. Any alpha variable may be entered, with capitalization recognized.

**PNavSubject=** The variable entered here will determine what is displayed in the sixth column of iNet's PNav. In the example above, we have the variable of **Subject**. This is the default. However, depending on the customer, you may wish to enter a variable such as **Client**, or **Patient**. Any alpha variable may be entered, with capitalization recognized.

**PNavAuthorOrder=** When you use PNav in Browse Mode, by default the users under the Author drop menu will be sorted alphabetically. To keep this setting, an entry of **0**, as the example above shows, should be used. However, if you would rather have the users sorted in the Author menu by their ID #, put an entry of **1**.

**WTLock=** Leaving this blank will allow the user to view any work type in the PNav list or enter a number to sort by. However, if you wish the transcriptionist to be locked to transcribing only certain work types, you may enter them with a comma (,) separating each work type number. You may also enter only one number, but it MUST be followed by a comma (,) even if there isn't a number after it.

**DeptLock=** Leaving this blank will allow the user to view any department in the PNav list or enter a number to sort by. However, if you wish the transcriptionist to be locked to transcribing only certain departments, you may enter them with a comma (,) separating each department number. You may also enter only one number, but it MUST be followed by a comma (,) even if there isn't a number after it.

**CategoryLock=** Leaving this blank will allow the user to **Request** and transcribe jobs from any category on the server. However, if you wish the transcriptionist to be locked to transcribing only certain categories, you may enter them with a comma (,) separating each category number (as seen above). You may also enter only one number, but it MUST be followed by a comma (,) even if there isn't a number after it.

## FAQ

### **Q: A transcriptionist received another person's work. How do I fix that?**

**A:** When this happens, if you *Right-Click Return* (to return the job back to the server), you will be given the option of entering the ID number of the transcriptionist you want the job to be reassigned to. For example, if that person's ID was 904, you could type *904* or simply *4* in that field. You may also select a transcriptionist from the drop-down list.

**Note:** The ID you are logged in with must have appropriate security permissions assigned to their profile for this to be possible.

### **Q: iNet left a job marked as *In Transcription* and will not allow the user to retrieve it again. How can I change its status back to *In Queue* again to resume proper retrieval?**

**A:** Using the *PNav* view, and selecting *Browse Mode*, choose the *In Trans* option under the **Status** filter field. Hit *Refresh*, and you will see a list of jobs marked as *In Trans* (In Transcription). Highlight the job which you wish to return to the queue and scroll all the way to the right until you see the *FileName* column in the *PNav* list. In this column, *Right-Click* the highlighted job (just as you would if you were going to choose the *Request* option) and select *Return to Queue*. Click OK to the warning screen that appears. You may now go about retrieving that job as usual.

### **Q: I was given a *The File Manager is not responding* audible error. What's wrong?**

**A:** 1) You may not have a currently working network connection. 2) There is a problem with the system server. The File Manager could be frozen or have been accidentally closed, requiring you to relaunch it. 3) The *ServerName* (UNC) path in your Settings may be incorrect.

### **Q: Why are the job demographic fields grayed out, preventing me from making changes when I do a *Special-Return* (by right-clicking the Return button)?**

**A:** This user must have a **Supervisor** profile set for them to have the appropriate permissions to do so. See the *Transcriptionists User Profiles* section above for further information.

### **Q: I am getting a *Run-time error '5': Invalid procedure call or argument error* when trying to return, save, or sign off a job. What am I doing wrong?**

**A:** You will get this error if you have renamed the Voice Solutions server to an unconventional Windows name. By default our Voice Solutions' servers are named *dac1*. However, often times it is necessary or desired to rename the server when installing it on a client's network. When you do so, keep in mind that you may use any variation of letters (A-Z) and numbers (0-9). Do NOT use any other type of character, such as the underscore ( \_ ), dash, and etc. Although Windows may allow those characters and a variety of other symbols, you will run into errors as our database is not written to accept entries with anything besides alphanumerics.

### **Q: iNet has locked up. It won't respond to any of my requests.**

**A:** Quit iNet and restart it. If it will not close from the menu, or you may need to go to your task manager. To do this, press and hold CTRL-ALT-DEL to bring task manager to the screen. If using XP, you must select the *Task Manager* button from the popup. Click the *Applications* tab, and find the *iNet - Player* entry in the list below. Highlight it by left clicking, and hit the *End Task* button on the bottom of the window.

### **Q: Every time I request a job or hit *Refresh* for *PNav*, iNet stops responding.**



**A:** Quit iNet and restart it. You may need to use Task Manager to do so (refer to the previous question for a step by step). If restarting iNet does not solve your problem, try restarting Windows. If problems still persist, the server's VSListener application, or File Manager may need to be restarted.

**Q: iNet will not load. I get an error before the main screen even shows.**

**A:** Typically any error you get that prevents iNet from loading is from the configuration file being corrupt. Locate and delete the file. It's in your iNet directory, which should be located at **C:\Mercury\iChannel**. In that folder there is a file named **Config.INI**, or if you have extensions hidden on your PC, you will simply see **Config**. Delete this file and open iNet. If it loads correctly, you will now need to reconfigure your settings (such as **ServerName**, **ID**, and **TransName**), as the defaults are present.

**Q: I just installed iNet and when I request a job it never loads. The play, stop and other typist buttons appear but no length is available.**

**A:** Typically this is related to a Windows permissions issue. Sometimes this can happen if iNet was not installed under an administrative account, or if it was, there are write restrictions.

**1<sup>st</sup>)** Verify that the user account you are under has **Full Control** over the **iChannel** directory and the **Temp** directory located at the root of your C: drive. If any **Read Only** attributes are checked for those directories, they should be removed.

**2<sup>nd</sup>)** Check for a **12345.wav** and a **12345-del.wav** file in the iChannel\Temp directory and delete them.

**3<sup>rd</sup>)** If errors still persist, it could be a sound card driver problem. Test your card by playing an audio file through Windows Media Player.

**Q: iNet runs fine under the PC's administrator user account, but I (receive errors)/(it won't respond) under other user accounts. Why?**

**A:** This is related to a Windows permissions issue. There are write restrictions, or (if on a domain)a restrictive group policy could be the culprit.

**1<sup>st</sup>)** Verify that the user account you are under has **Full Control** over the **iChannel** directory and the **Temp** directory located at the root of your C: drive. If any **Read Only** attributes are checked for those directories, they should be removed.

**2<sup>nd</sup>)** If that doesn't solve the problem, try promoting the user account to a local admin temporarily and see if the issue disappears. Often, you can remove the admin status from an account after iNet is ran the first time and will not experience any further technical problems.

**3<sup>rd</sup>)** As a last resort, have the local network administrator remove that user/PC from the domain group policy. If the problem disappears, check which restrictions are being applied.



Copyright 2007 Digital Accessories Corp.